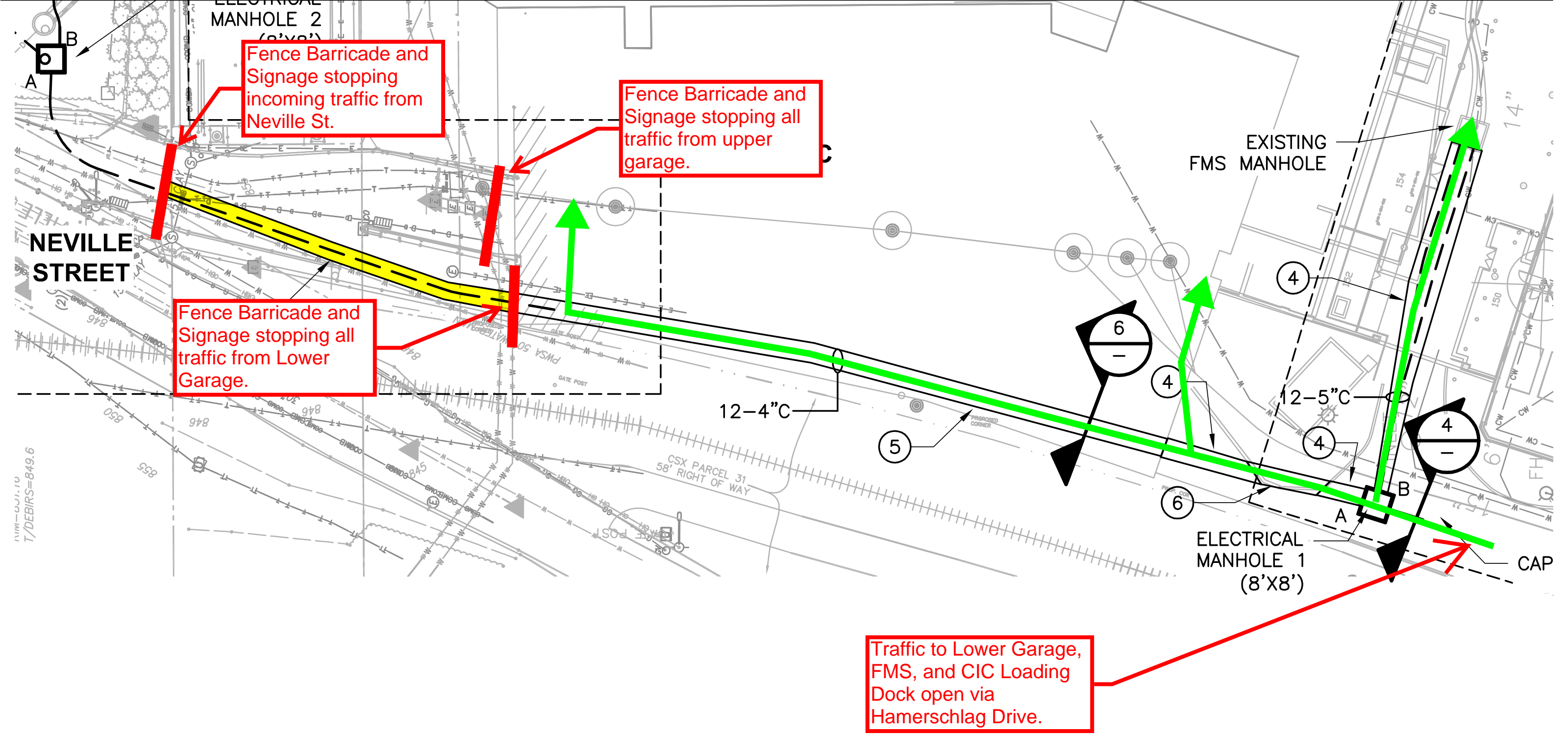
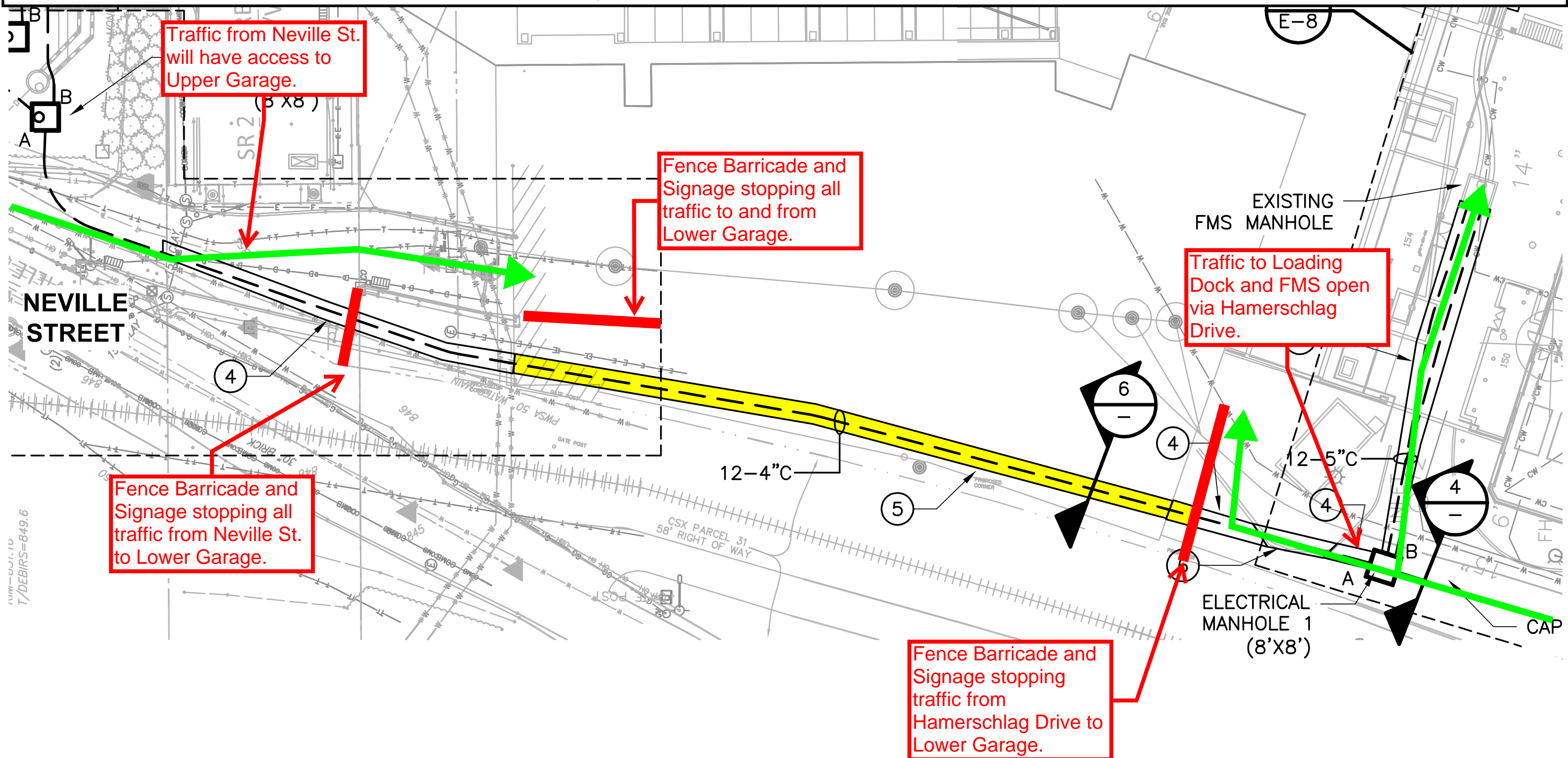


Phase #1 Fencing and Barricade Plan (Approx. 5.30.17 - 6.4.17)

- Access to Upper and Lower Garage from Neville Street Closed.
- Work Area Highlighted in Yellow
- Traffic Access indicated by Green Arrows
- Sawcutting Concrete for Entire Length of Duct Bank to take place prior to excavation. Flaggers will be in place to slow traffic and coordinate with sawcutting on May 25, 2017.
- No Pedestrian Access Permitted Between Fencing.

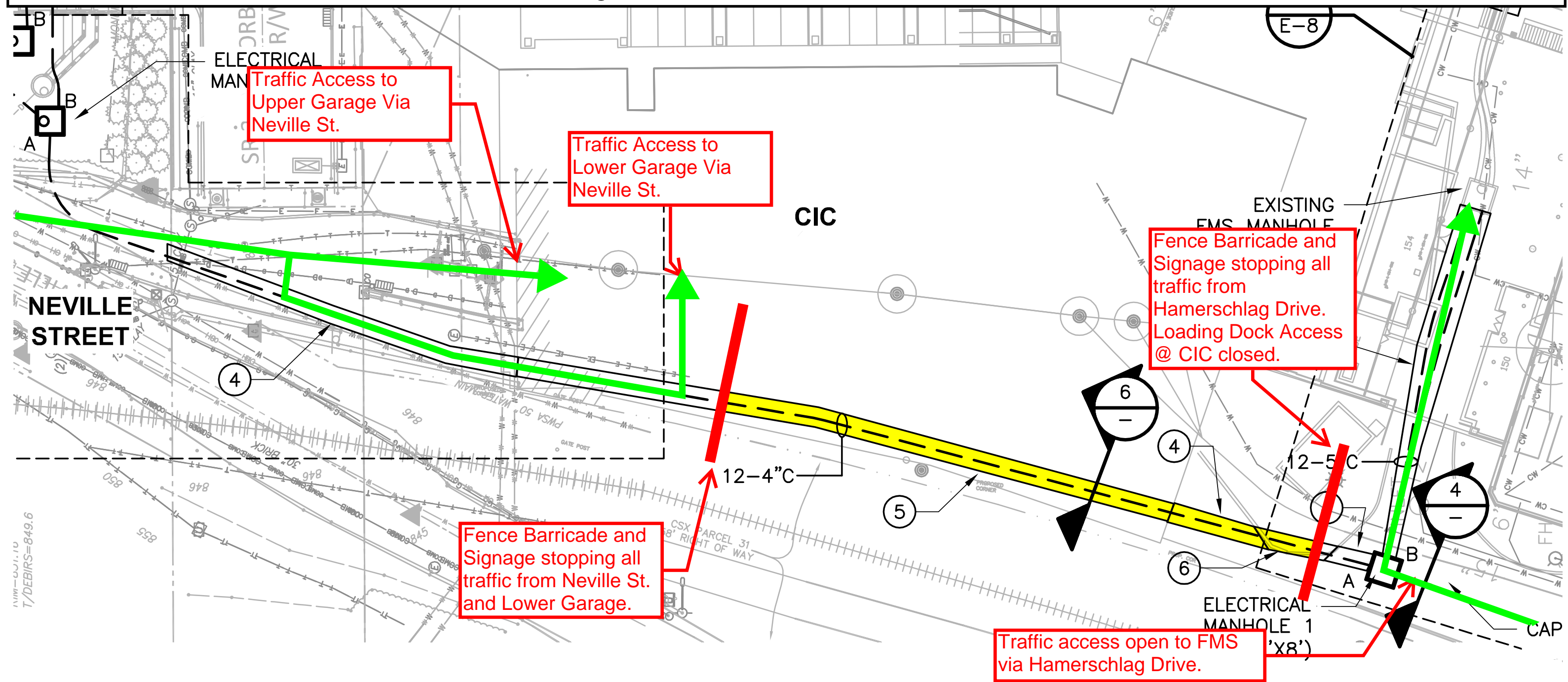


- No Pedestrian Access Permitted Between Fencing.**



Phase #3 Fencing and Barricade Plan (Approx. 6.8.17 - 6.12.17)

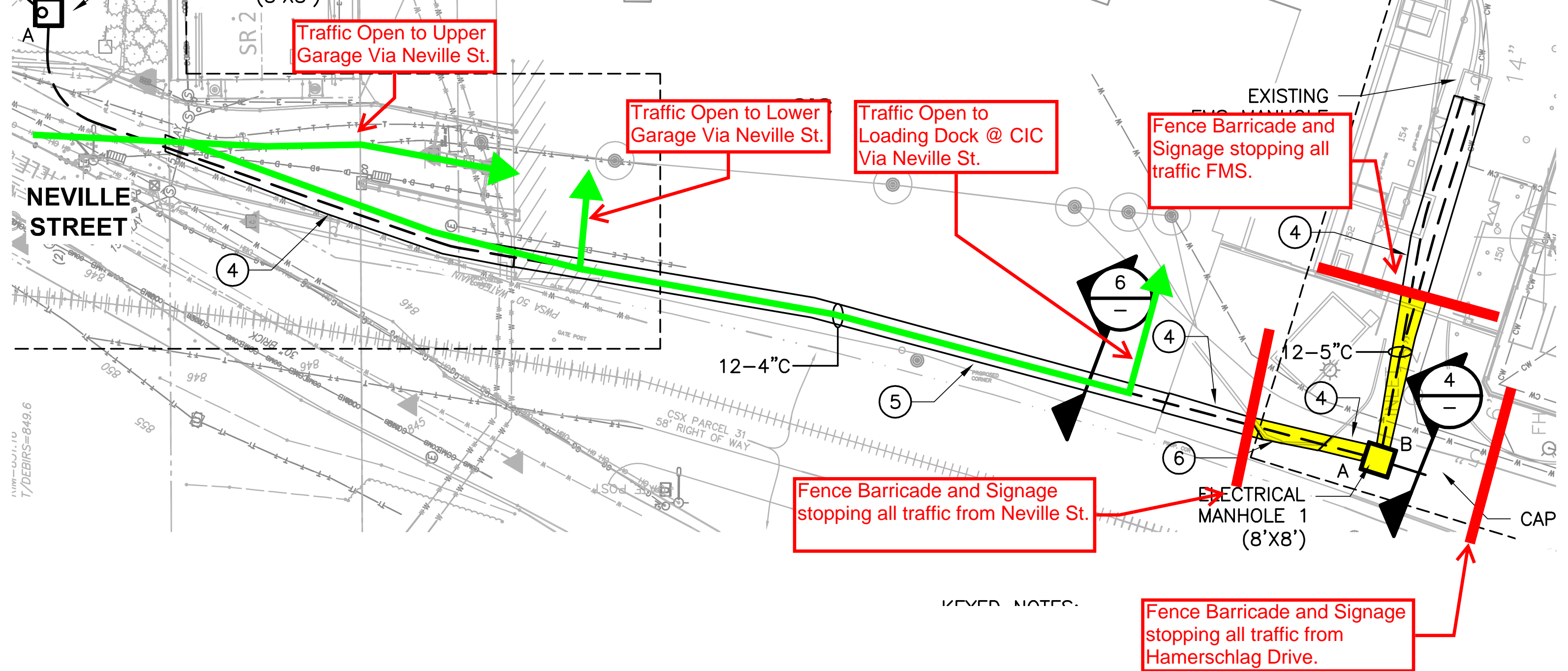
- Access to CIC Loading Dock Closed
- Work Area Highlighted in Yellow
- Traffic Access indicated by Green Arrows
- No Pedestrian Access Permitted Between Fencing.



Phase #4 Fencing and Barricade Plan (Approx. 6.12.17 - 6.15.17)

- Access to FMS Closed.
- Access to Garage from Hamerschlag Drive Closed.
- Work Area Highlighted in Yellow
- Traffic Access indicated by Green Arrows
- No Pedestrian Access Permitted Between Fencing.

-
- Plan view of the site showing the location of Electrical Manhole 2 (8'x8'). The manhole is located near the building and the existing sewer line. The plan view includes the building footprint, the existing sewer line, and the proposed sewer line. The manhole is labeled "ELECTRICAL MANHOLE 2 (8'x8')".



Phase #5 Fencing and Barricade Plan (Approx. 6.15.17 - 6.20.17)

- Access to FMS Closed.
- Work Area Highlighted in Yellow.
- Traffic Access indicated by Green Arrows.
- No Pedestrian Access Permitted Between Fencing.

