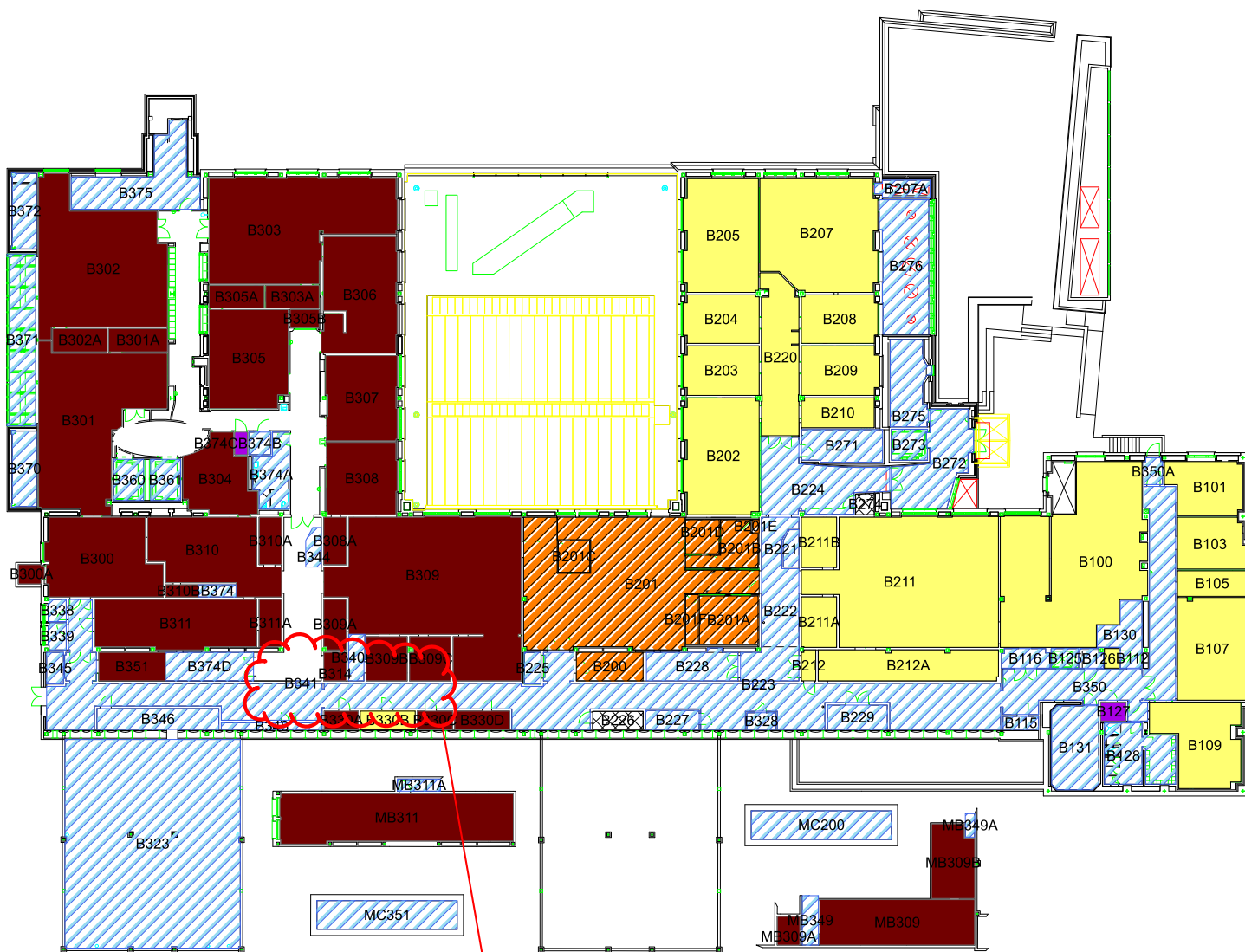


Doherty Hall Floor B












Flood Impact Area
from Level 3 heating
line break

Legend

DH-B-Departments

Occupying Organization

-  112500 - COMMUNICATIONS CABLING INFRASTRUCTURE, 93 occupied sq ft
-  210200 - ART, 1,574 occupied sq ft
-  210200 - ART, 10,465 occupied sq ft
-  220210 - CHEMICAL ENGINEERING, 9,959 occupied sq ft*
-  530300 - FMS OPERATIONS-MAINTENANCE, 11,568 occupied sq ft
-  530300 - FMS OPERATIONS-MAINTENANCE, 110 occupied sq ft
-  530300 - FMS OPERATIONS-MAINTENANCE, 576 occupied sq ft
-  530320 - FMS OPERATIONS-CUSTODIAL SERVICES, 55 occupied sq ft
-  OAM900 - SHARED ROOM OCCUPANCY